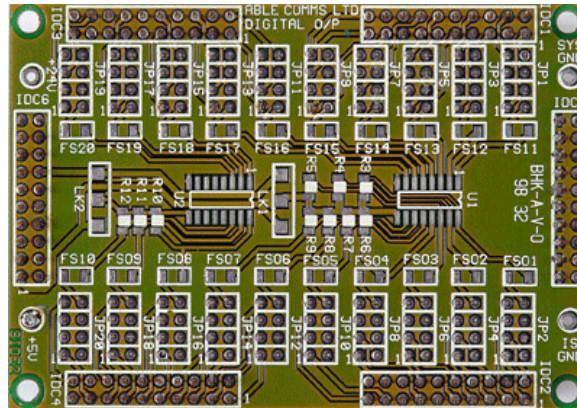




Digital IO Board

The Digital I/O board is a multi-purpose board with 14 inputs / outputs. IDC connectors are available for patching signals to different inputs. Channels can be patched to be inputs or outputs. The 5 volt side is protected by zener diodes.



Features

- 14 channel inputs or outputs
- 50 volt input range
- 500 ma maximum current drive capability
- Industry standard protocols CAN, Profibus, Modbus